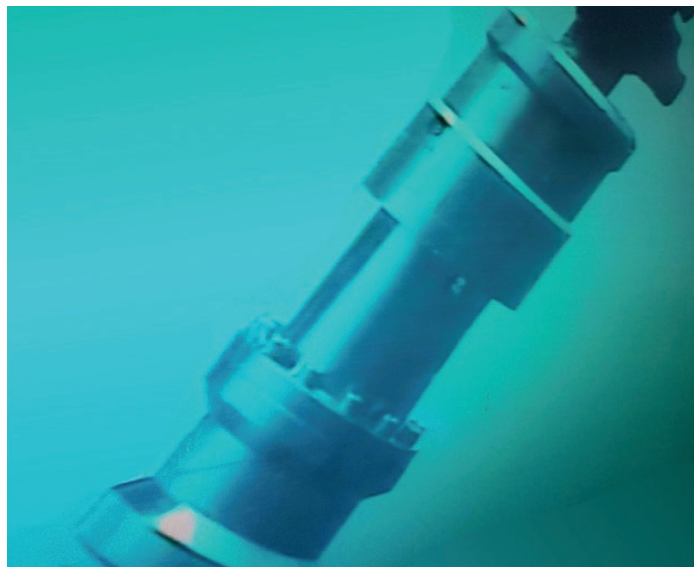




SUBSEA EQD SKID

Emergency Quick Disconnect



SPECIFICATIONS

- Weaklink Breakload : 1.5 – 6 tonnes
- Swivel hoist ring SWL : 3 tonnes (5:1 SF), 6 tonnes (2.5:1 SF)
- Maximum Operating Pressure : 690 Bar
- Nominal Bore Diameter : 50mm [2"]
- Maximum gross weight in air : 6 tonnes
- Classification : DNV 2-7-3
- Painted yellow to Norsok M510 System 7B
- Maximum pull out angle : 60°
- Lifting slings included.

SUBSEA EQD SKID SYSTEM

- Diver or ROV operated subsea disconnect system.
- Both ends of hose connected to skid using Hot Stab system.
- Used in conjunction with Flint Subsea EQD connectors.
- EQD devices hooked onto skid using swivel hoist rings to prevent tension being applied through hoses.
- EQD devices break when tension pin loads are exceeded.
- Both ends of the EQD device are checked off preventing discharge to the marine environment and protecting equipment.
- The skid includes removable ballast weight to give a weight in air from 1.5 tonnes to 10 tonnes.
- Both sides of the EQD must be returned to the vessel for reconnection.

